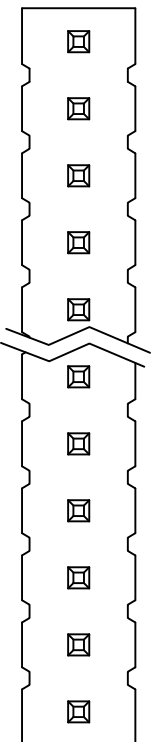


CUSTOMER COPY



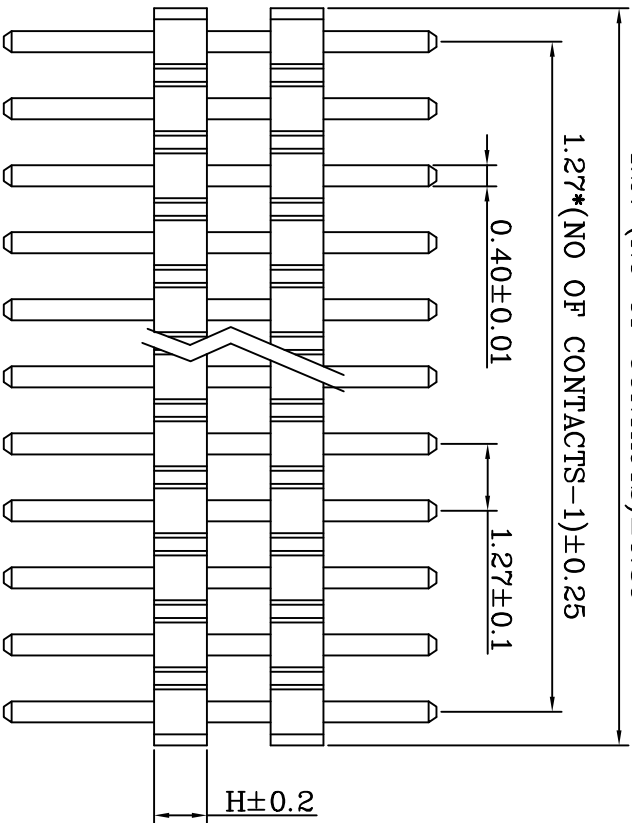
1.27*(NO OF CONTACTS)±0.30

1.27*(NO OF CONTACTS-1)±0.25

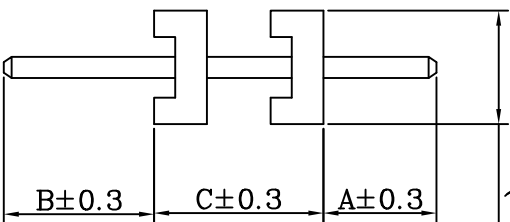
0.40±0.01

1.27±0.1

H±0.2



2.2(REF)



Pin Chart

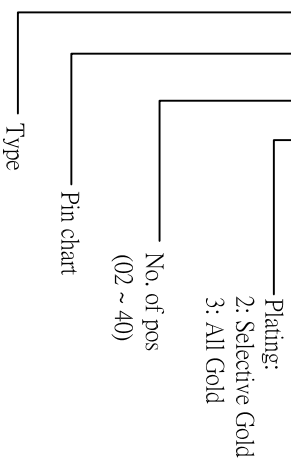
No.	A	B	C	H
00	1.80	1.80	4.40	1.00
01	2.30	2.90	4.00	2.00
02	4.40	1.60	4.00	2.00
03	3.00	2.30	3.40	1.70
04	6.00	1.80	4.00	2.00
05	3.00	3.00	5.00	2.50

No.	A	B	C	H
06	3.00	2.30	3.60	1.00
07	4.40	1.80	5.60	2.00
08	3.00	3.00	11.10	2.50
09	2.20	3.00	8.90	2.50
10	3.00	2.30	4.00	2.00
11	3.50	3.50	2.00	1.00

No.	A	B	C	H
12	4.00	2.80	5.40	1.00
13	3.00	3.00	3.00	1.50
14	3.00	2.30	5.00	1.00

ORDER INFORMATION

171 56 XX XX X



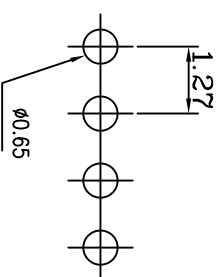
REV.	DESCRIPTION	APP.	DATE
A	NEW DESIGN		

SPECIFICATION

- * Current Rating: 1 A
- * Withstanding Voltage: 600 VAC (1 min.)
- * Insulation Resistance: 5000Megohms MIN.
- * Contact Resistance: 30 Milliohms MAX.
- * Operating Temperature: -55°C to +105°C
- * Retention Force: 450g MIN.

MATERIAL

- * Contact: Copper Alloy; 0.40mm square post
- * Insulator: High Temperature Plastic.
- * Plating: Selective Gold or All Gold



Recommended P.C. Board Hole Layout



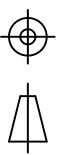
钰满荣企业股份有限公司 ACME LUX CO., LTD.

TEL:886-2-85124595

FAX:886-2-85124322

SCALE: 1:1
0.00±0.20 UNIT: mm
0.000±0.1

PART NO: 107300
APP BY: Hung



TITLE: Pitch 1.27mm Single Row Double Base 0.4mm Square Post Pin Header Connector
MATERIAL: Nylon 6T RoHS

CHK BY: Cheryl
DR BY: Amos

DWG. NO. C17156XXXXXX